

BELZONA CHILLS OUT BREWERY

CUSTOMER

A Mid-Western Brewery in Missouri

APPLICATION DATE

December 1995

APPLICATION SITUATION

One of three lithium bromide chillers used to cool beer to 70°F during the manufacturing process

PROBLEM

The tube sheet was badly eroded/corroded. There were numerous leaks between the tubes and the tube sheet.

PRODUCTS

Belzona® 1311 (Ceramic R-Metal)

Belzona® 1321 (Ceramic S-Metal)

SUBSTRATE

Copper tubes, steel tube sheet

APPLICATION METHOD

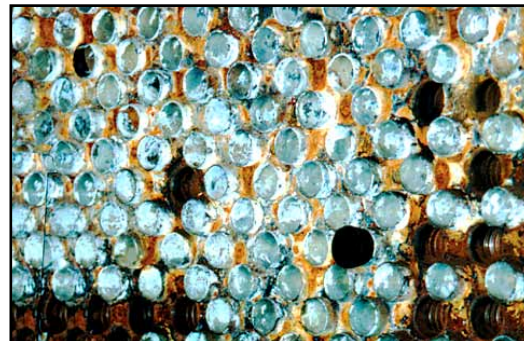
The application was carried out in accordance with Belzona Know-How System Leaflet HEX-1.

BELZONA FACTS

The area coated was 60 sq. ft. on each end. Two more units are scheduled this year. The customer benefited by saving replacement costs, reduced down time and continuation of the manufacturing process.

PICTURES

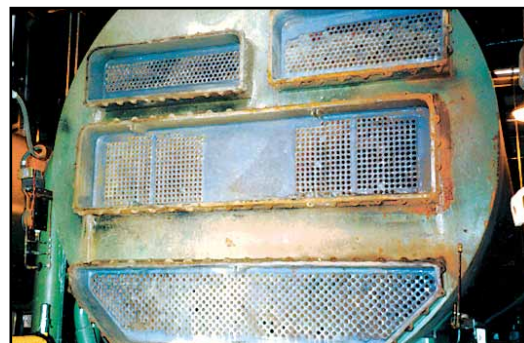
1. Close up view of one of the eroded/corroded areas
2. Application of Belzona® 1321 over Belzona® 1311
3. Completed job, tube sheet rebuilt



1.



2.



3.

For more examples of *Belzona Know-How In Action*, please visit <http://khia.belzona.com>



ISO 9001:2008
Q 09335
ISO 14001:2004
EMS 509612

Belzona products are
manufactured under an ISO
9000 Registered Quality
Management System.

UK • USA • Canada • China
www.belzona.com


BELZONA®
Repair • Protect • Improve